



- **ARKON C-CLASS**
- **MV URSA J** - 2000, ANTIGUA & BARBUDA
- **MV LYRA J** - 2001, ANTIGUA & BARBUDA

- **MV LUNA J** - 2001, ANTIGUA & BARBUDA

## MAIN DATA

### ◆ CLASS

GL CLASS  
IMO FITTED

### ◆ TYPE

HEAVY-LIFT, BOX-HOLD, MULTIPURPOSE VESSEL

### ◆ GEAR

2 X 200 MTS SWL  
COMBINABLE TO 400 MT SWL

### ◆ DIMENSIONS

LOA: 119.8 M  
BEAM: 20.0 M  
DRAUGHT: 7.7 M

### ◆ DEADWEIGHT CAPACITIES

ABOUT 8.000 MT

### ◆ SERVICE SPEED

ABOUT 16.0 KNOTS

ALL DATA IS GIVEN "ABOUT" AND WITHOUT GUARANTEE.



For full time charter description, please contact our office.

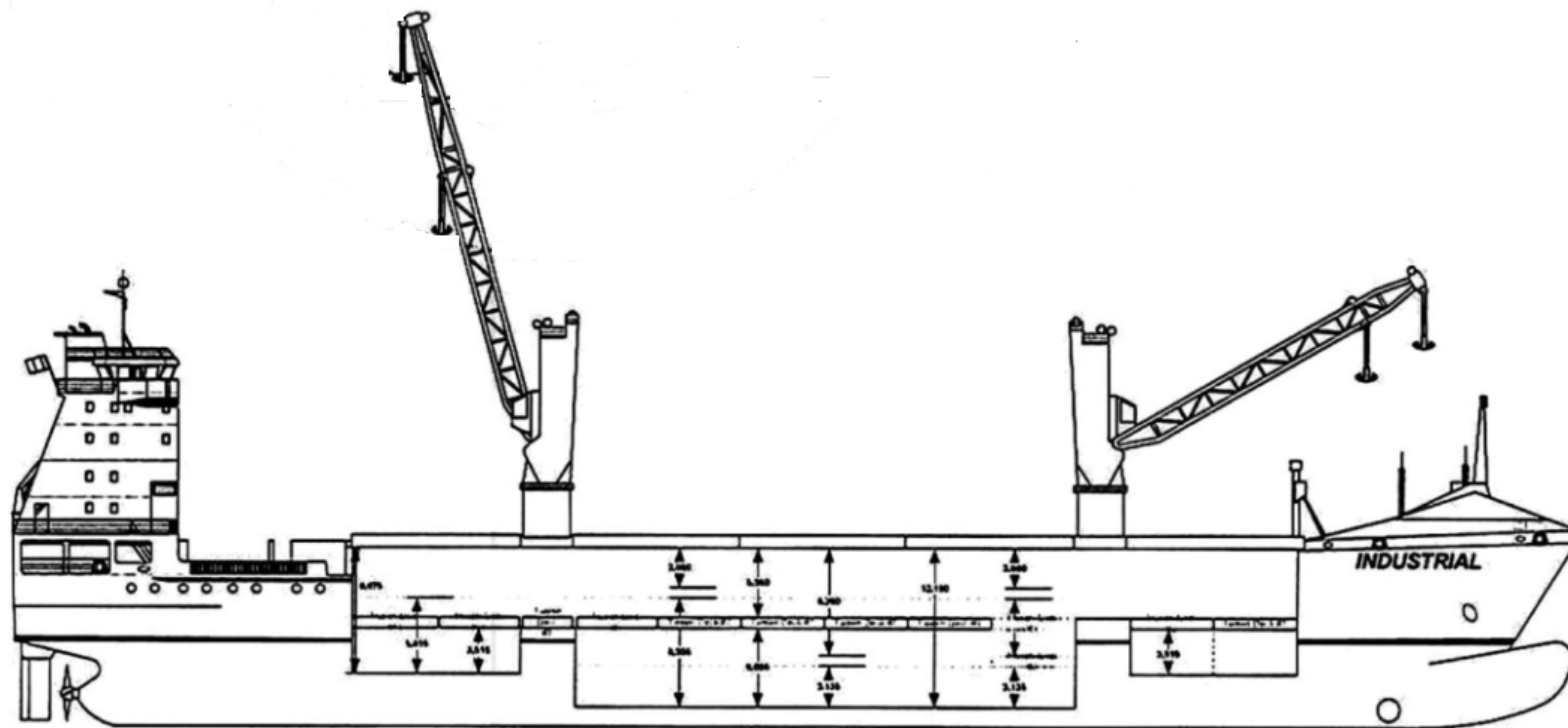
[www.arkon-shipping.eu](http://www.arkon-shipping.eu)

**ARKON Shipping & Projects GmbH & Co. KG**

Boschstrasse 16, 49733 Haren, Germany,

☎ +49 59 32 72 780, Email: [projects@arkon-shipping.de](mailto:projects@arkon-shipping.de)

- C-CLASS
- MV LYRA J
- MV URSA J
- MV LUNA J



[www.arkon-shipping.eu](http://www.arkon-shipping.eu)

ARKON Shipping & Projects GmbH & Co. KG

Boschstrasse 16, 49733 Haren, Germany,

☎ +49 59 32 72 780, Email: [projects@arkon-shipping.de](mailto:projects@arkon-shipping.de)